

## Office Depot, Charlotte, North Carolina

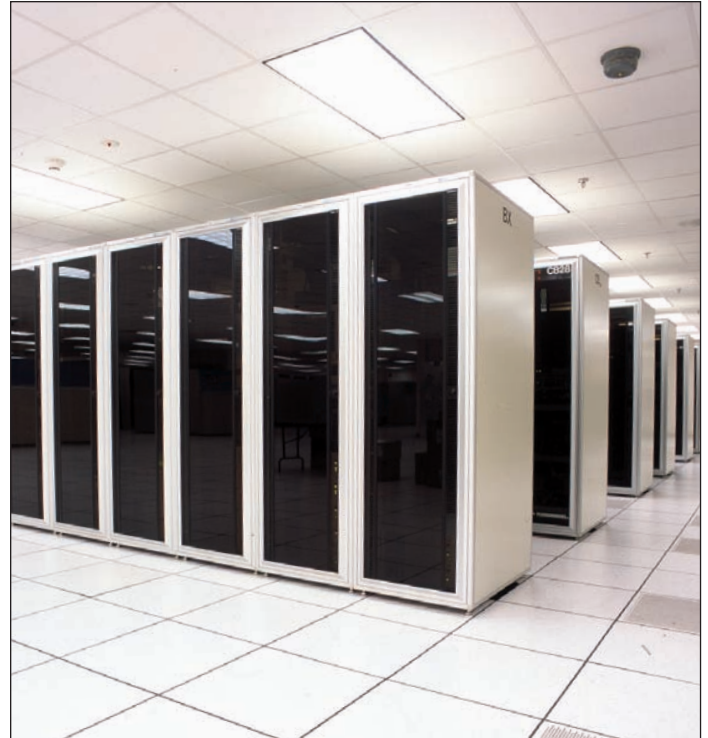
### Challenge:

Home of OfficeDepot.com and the central data center for the world's largest reseller of office products, Charlotte is the carefully selected location of one of the most sophisticated retail and operational networks in the world. The network supports nearly 1,000 stores, 100 offices, delivery centers and call centers, international operations in 17 countries and numerous e-commerce application sites. With all of these communications channels to manage and keep connected, system interruptions can be devastating. Just one minute of downtime can create great concern since company-wide transactions top more than \$12 billion annually. Precise planning for a standardized approach to the network support system was mandatory from the center's outset. Stability and security for the equipment (including IBM® S/390 mainframe computers, 14 AS/400s and more than 300 Compaq® servers running over a Cisco® network and connected via SCON/Ethernet, OC3/token and OC12/fiber) had to be guaranteed. Nothing less would be acceptable.

### Solution:

When the data center was headquartered in Delray Beach, Florida, there was no matching of the support system, due to rapid growth. But at the new operations in Charlotte, a standardized approach and a clean appearance quickly took shape by using CPI's MegaFrame® Cabinet System throughout the more than 31,000 square foot facility. The center's "City Of A Network" rests above a raised floor and has a very consistent skyline since many of the "blocks" were built using the MegaFrame. Over 175 MegaFrame cabinets housing servers and various system components were placed on the grid in specific proximity to key equipment in order to simplify cable routing.

Management calls the selection of CPI products for its new data center "a testament to CPI's ability to provide first class architectural support." With the



help of CPI, Office Depot realized its goal of ensuring stability and security in its new data center. [CPI](#)

### About Chatsworth Products, Inc.

Chatsworth Products, Inc. (CPI) is a global manufacturer providing voice, data and security products and service solutions that optimize, store and secure technology equipment. CPI Products offer innovation, configurability, quality and value with a breadth of integrated system components, covering virtually all physical layer needs. Unequaled customer service and technical support, as well as a global network of industry-leading distributors, assures customers that CPI is dedicated to delivering products and services designed to meet their needs. Headquartered in the US, CPI operates global offices within the US, Mexico, Canada, China and the United Kingdom. CPI's manufacturing facilities are located in the US, Asia and Europe. ([www.chatsworth.com](http://www.chatsworth.com))

©2011 Chatsworth Products, Inc. All rights reserved. CPI, CPI Passive Cooling, MegaFrame, Saf-T-Grip, Seismic Frame, SlimFrame, TeraFrame, Cube-iT Plus, Evolution, OnTrac, and QuadraRack are federally registered trademarks of Chatsworth Products, Inc. GlobalFrame, Simply Efficient and Velocity are trademarks of Chatsworth Products, Inc. All other trademarks belong to their respective companies. 1/11